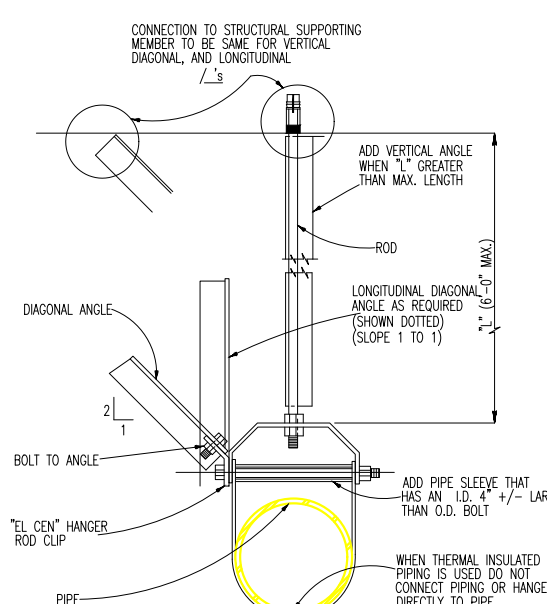
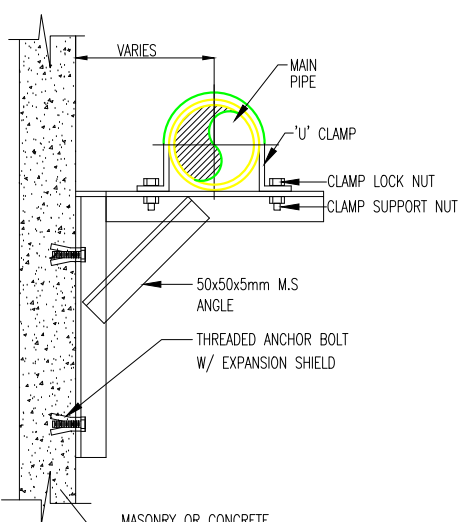
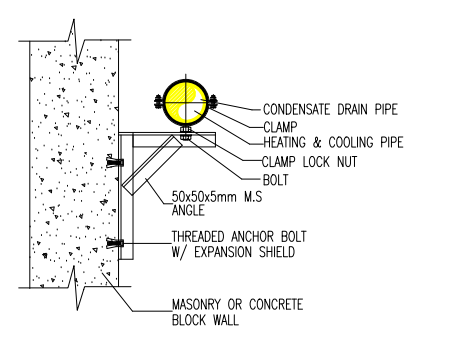
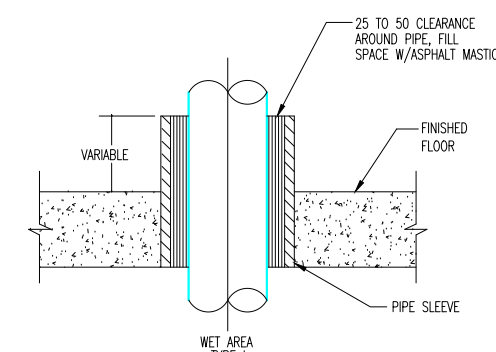
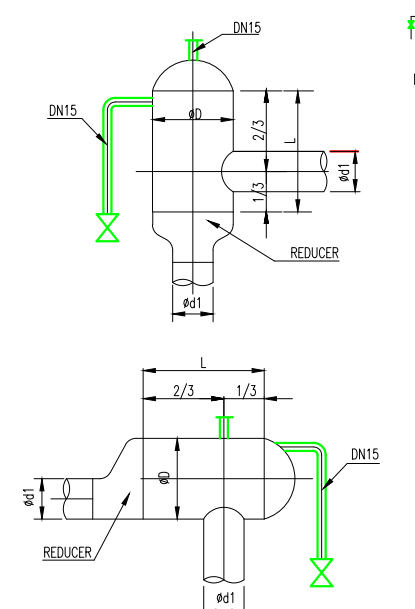
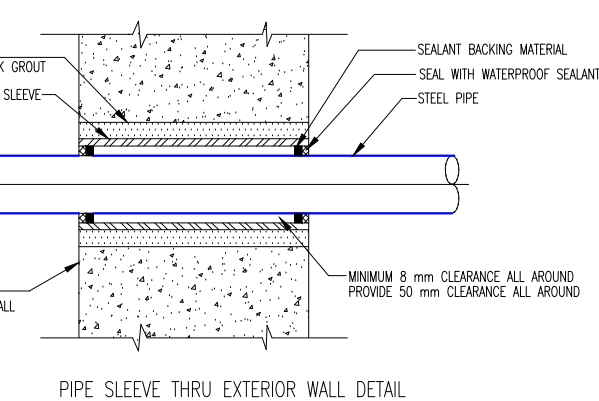


MECHANICAL SYSTEM PIPING TYPES		
ITEM NO	RELATED PIPING SYSTEM NAME	TYPE OF PIPE
1	HEATING AND COOLING SYSTEM MAIN & RISER LINES	
1.1	-#50 AND LESS	WATER-GAS STEEL PIPE (Use Threaded Joints)
1.2	-UPPER FROM #50	ELECTRIC-WELDED STEEL PIPE (Use Welded Joints)
1.3	-HEATING PIPES FOR RADIATOR & CONNECTORS, IN THE SKEEDED	PEX PIPE

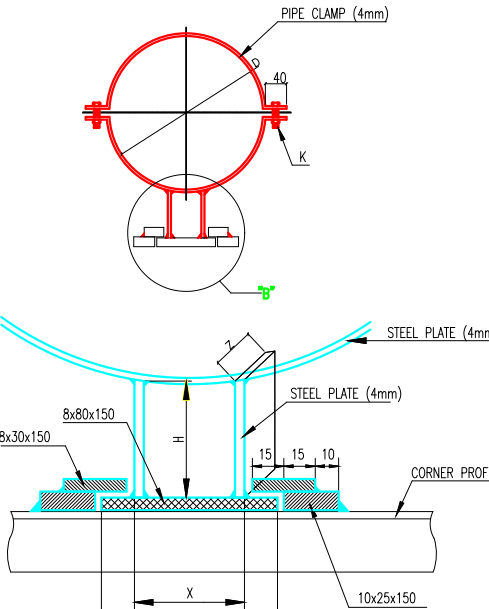
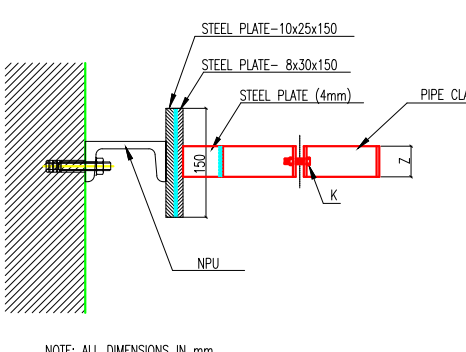
PIPE INSULATION INTERIOR PIPES : FLEXIBLE, CLOSED CELL ELASTOMERIC NITRILE RUBBER THERMAL CONDUCTIVITY OF 0.037 W/M/K INSULATION (AWR/FEET OR EQUIV) EXTERIOR PIPES : MECHANICAL ROOM : INSULATION WILL BE COVERED BY ALUMINUM CLADDING (0.6mm)		
PIPE WORK	PIPE SIZE	INSULATION THICKNESS
HEATING SYSTEM	DN 20 - DN 40	38 mm
	DN 50 AND LARGER PIPE	50 mm
COOLING SYSTEM	DN 20	18 mm
	DN 25 - DN 40	25 mm
	DN 50 AND LARGER PIPE	38 mm



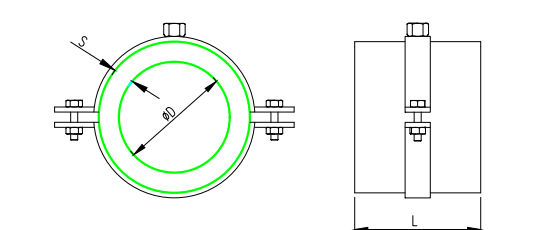
FOR BLACK STEEL & GALVANIZED PIPES					
PIPE DIAMETER		L SPACING (in.)		ANCHOR ROD SIZE	
DN (mm)	INCH	VERTICAL	HORIZONTAL		
15	1/2"	3	2.1	M8	
20	3/4"	3	2.1	M8	
25	1"	3	2.1	M8	
32	1 1/4"	3	2.1	M8	
40	1 1/2"	3.7	2.7	M10	
50	2"	3.7	3	M10	
65	2 1/2"	3.7	3.4	M10	
80	3"	4	3.7	M10	
100	4"	4	4.3	M12	
125	5"	4	4.3	M12	
150	6"	4	5.2	M12	
200	8"	5	5.8	M12	
250	10"	5	6.1	M16	
300	12"	5	7	M16	

[illegible]

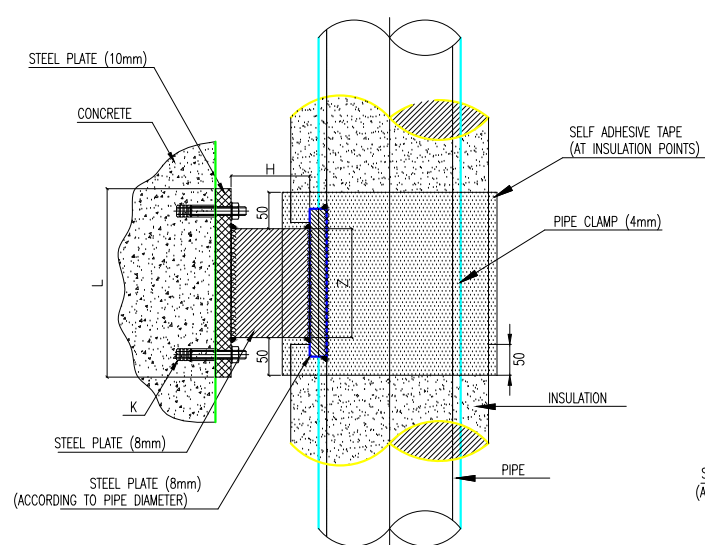
LINE DA	AIR TUBE DA	TUBE SIZE
DN25	40(mm)	1 1/2
DN25	DN50	2 1/2
DN32	DN50	2 1/2
DN40	DN80	3 1/2
DN50	DN80	2 1/2
DN65	DN125	2 3/4
DN80	DN125	2 3/4
DN100	DN200	3 3/4
DN125	DN200	4 3/4
DN150	DN300	4 3/4
DN200	DN400	6 3/4
DN250	DN400	7 3/4
DN300	DN400	9 3/4
DN350	DN500	10 3/4
DN400	DN600	12 3/4



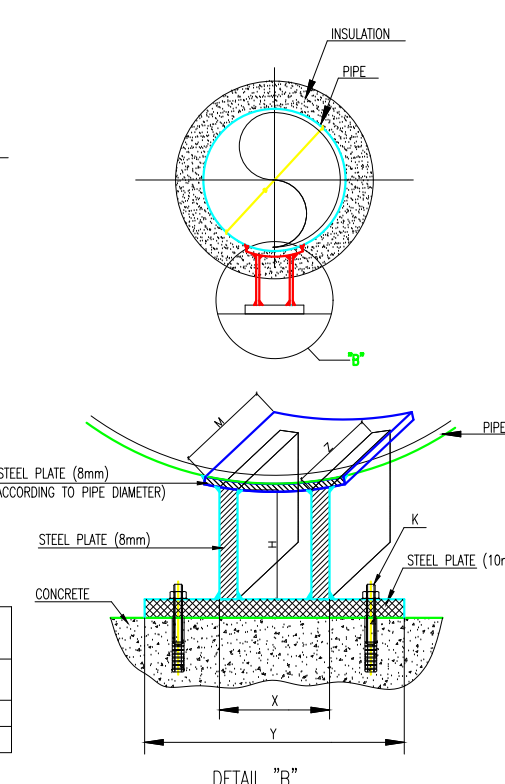
PIPE NOMINAL OD INCHES	STEEL PLATE DIMENSIONS ACCORDING TO PIPE SIZE					
SIZE	X	Y	Z	H	D	K
2" (DN 50)	40 mm	70 mm	40 mm	115 mm	60 mm	M10x25
2 1/2" (DN 65)	40 mm	70 mm	40 mm	107 mm	75 mm	M10x25
3" (DN 75)	45 mm	75 mm	50 mm	100 mm	80-90 mm	M10x25
4" (DN 100)	50 mm	80 mm	50 mm	88 mm	110-125 mm	M10x25
5" (DN 125)	60 mm	90 mm	50 mm	75 mm	100-145 mm	M10x30
6" (DN 150)	60 mm	90 mm	50 mm	60 mm	160-170 mm	M10x30
8" (DN 200)	70 mm	100 mm	60 mm	50 mm	210-230 mm	M10x35
10" (DN 250)	70 mm	100 mm	60 mm	50 mm	275-285 mm	M10x35
12" (DN 300)	80 mm	110 mm	75 mm	45 mm	304-335 mm	M10x40
14" (DN 350)	80 mm	110 mm	75 mm	45 mm	366-395 mm	M10x40
16" (DN 400)	90 mm	120 mm	80 mm	40 mm	430-455 mm	M10x40



TECHNICAL FEATURE			APPROXIMATE VALUE	
DENSITY			MO kg/m <sup>3</sup>	
HEAT RESISTANCE			-150°C / +130°C	
SIZE	Ø D	S (mm)	L (mm)	CLAMP SIZE
1/2"	DMS1	21,30	50	3"
3/4"	DMS2	26,90		67-77
1"	DMS3	33,70		67-77
1 1/4"	DMS4	42,40		83-85
1 1/2"	DMS5	48,30		87
2"	DMS6	60,30		94-104
2 1/2"	DMS7	76,10		5"
3"	DMS8	88,30		151-164
4"	DMS10	114,30		5"
4"	DMS12	129,30		196-209
6"	DMS9	168,30	100	8"
8"	DMS10	219,10		10"
10"	DMS20	273,00		14"
12"	DMS10	324,00		16"
14"	DMS12	369,00	150	16"
16"	DMS40	495,00		18"



STEEL PLATE DIMENSIONS ACCORDING TO PIPE SIZE							
PIPE NOMINAL (Ø) DIAMETER	X	Y	Z	H	K	L	U
2 1/2" (DN 65)	40 mm	120 mm	100 mm	86 mm	M10 EXP-STUD	200 mm	150 mm
4" (DN 100)	50 mm	140 mm	150 mm	89 mm	M10 EXP-STUD	250 mm	200 mm



PROJECT CLIENT  
დამკვეთი:  
REGISTERED ADDRESS:  
მისამართი:

NOTES

MECHANICAL SYSTEMS ENGINEER  
*Evgeniy Matlov*

PROJECT:  
პროექტი:

DRAWING TITLE:  
ნახაზის სახელწოდება

HVAC  
Standard details of piping

SCALE: / მასშტაბი

DRAWN BY:

დასახელება:

SHEET NO:  
၄၅၆၇၈၉၀

ნათესავი:

DRAWING NO.  
5x5x9x1x5m2

CMC 1.0E-4

290-230-1